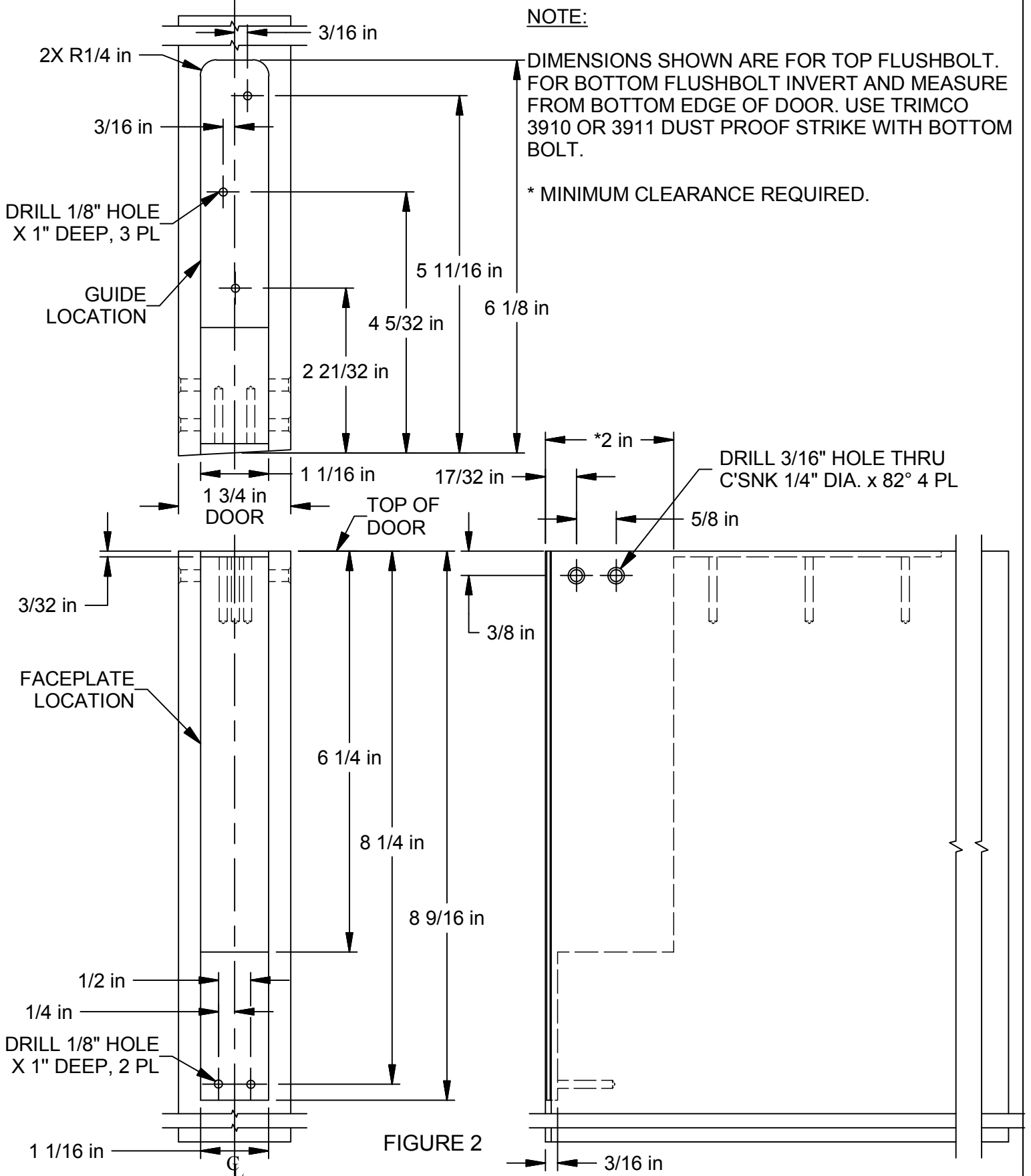


FIGURE 1

INSTALLATION INSTRUCTIONS

- 1) PREPARE INACTIVE DOOR AS SHOWN IN FIGURE 2. SEAL DOOR IMMEDIATELY. (TOP CORNER SHOWN)
- 2) PREPARE FRAME FOR ANSI A115.4 STRIKE AS IN FIGURE 3. LOCATE STRIKE TO LINE UP WITH BOLT.
- 3) INSTALL TRIMCO 3910 OR 3911 DUST PROOF STRIKE IN FLOOR (TEMPLATE AVAILABLE), OR ANSI A115.4 STRIKE SHOWN IN FIGURE 3. LOCATE STRIKE TO LINE UP WITH BOLT. INSTALL STRIKE.
- 4) INSTALL TRIMCO 3815L AS SHOWN IN FIGURE 1.
- 5) HANG DOOR.
- 6) ADJUST BOLT SO WHEN FULLY RETRACTED TO PROVIDE 1/8" CLEARANCE BETWEEN BOLT AND STRIKE. TO ADJUST BOLT REMOVE SCREWS UNDERLINED IN FIGURE 1 AND REMOVE BOLT. ROTATE BOLT UP OR DOWN AS REQUIRED, THEN REPLACE BOLT.
- 7) PREPARE ACTIVE DOOR AS SHOWN IN FIGURE 4. TRIGGER STRIKE TO LINE UP WITH CENTERLINE OF TRIGGER AS SHOWN IN FIGURE 4. INSTALL STRIKE USING 2-NO. 8 X 1" SMS. SHIM AS REQUIRED TO PROVIDE 3/32 CLEARANCE BETWEEN INACTIVE DOOR AND TRIGGER STRIKE.

NOTE: FAILURE TO PRE-DRILL SCREW HOLES WILL VOID WARRANTY.



NOTE: This template is provided for use only on the job for which is was requested. Trimco reserves the right to make design changes without notice. Trimco will not be responsible for errors or damage caused by the use of out-of-date templates.

DATE

03/12/15

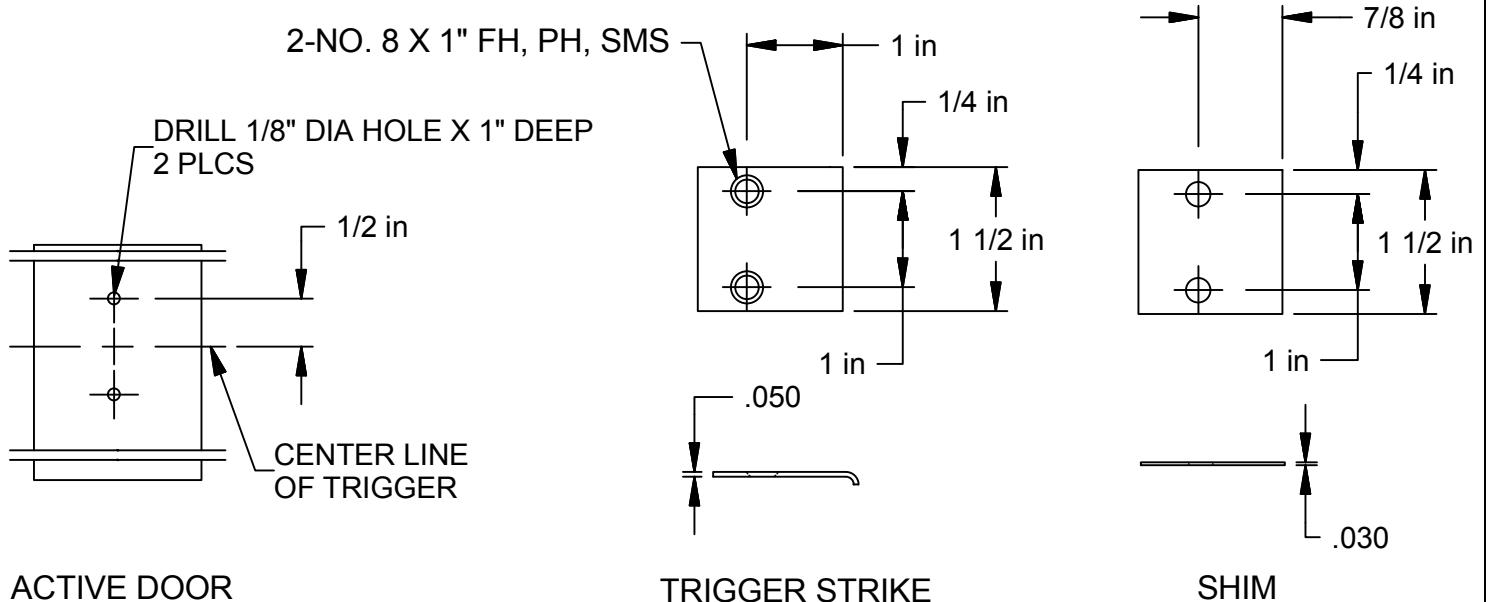
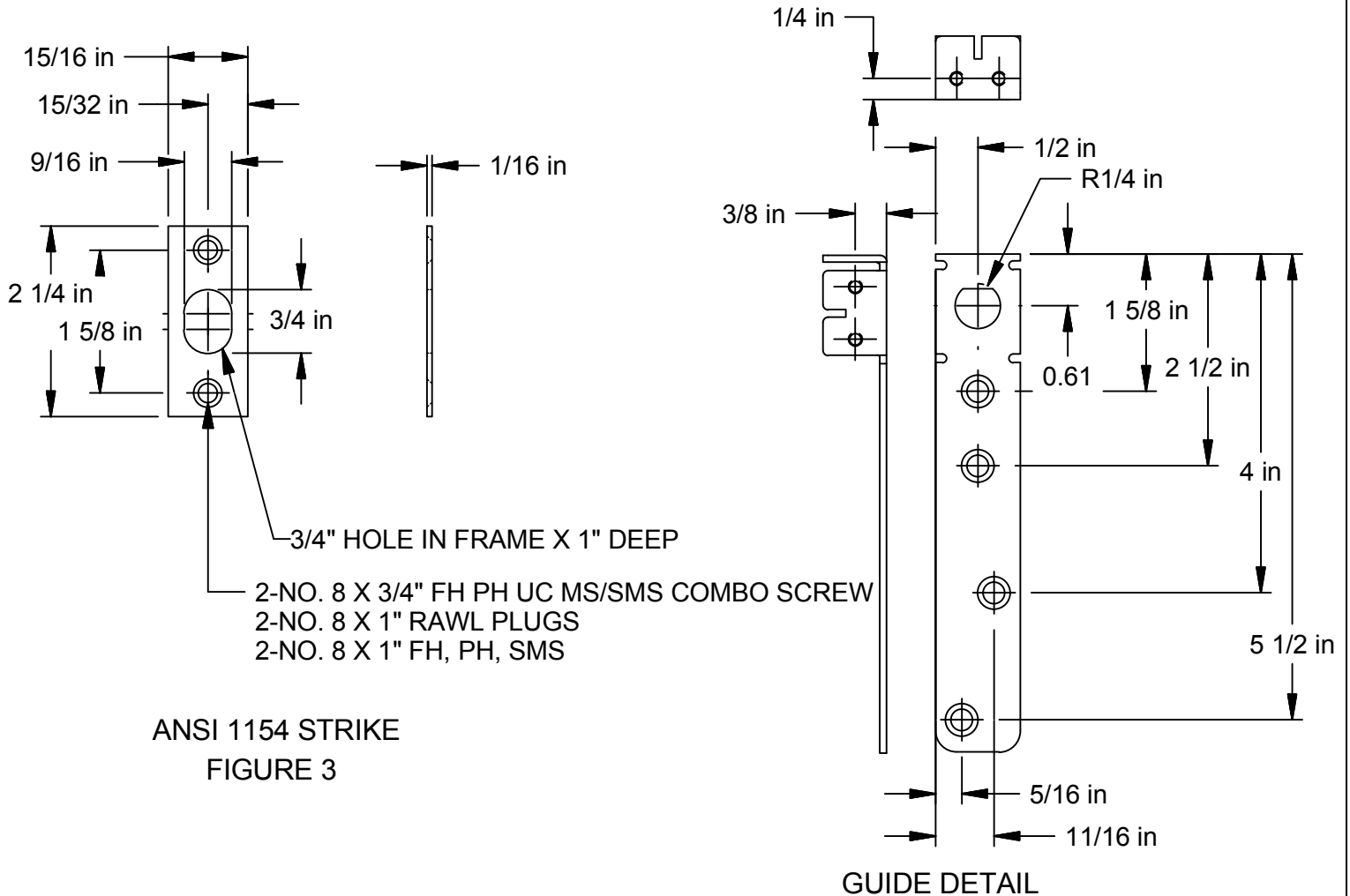


FIGURE 4

NOTE: This template is provided for use only on the job for which is was requested. Trimco reserves the right to make design changes without notice. Trimco will not be responsible for errors or damage caused by the use of out-of-date templates.

DATE

03/12/15