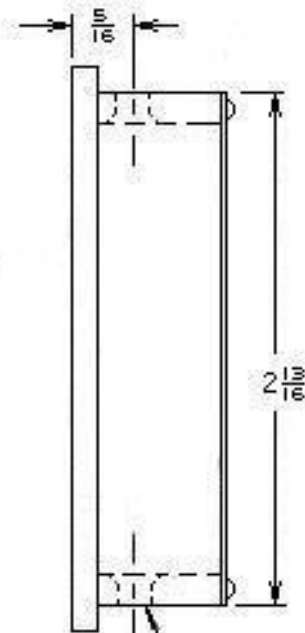
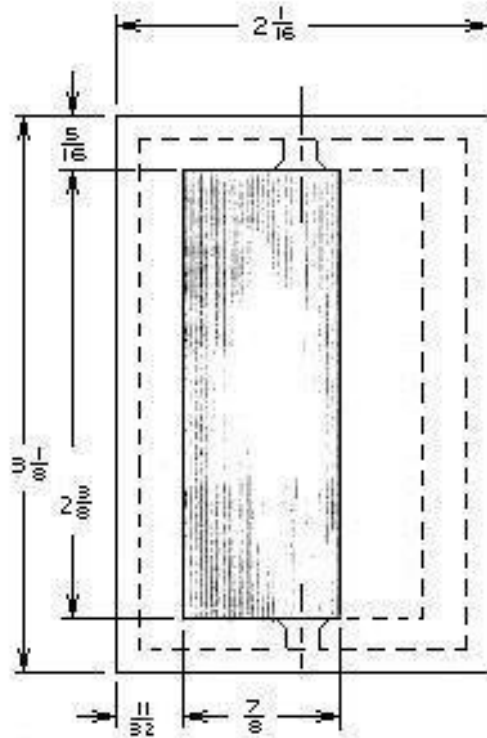
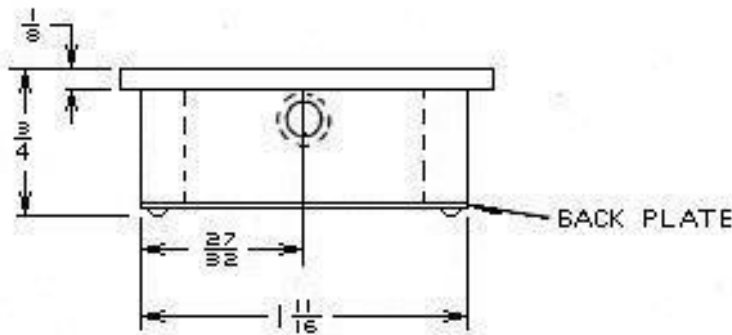


A	CHANGE DIMS	5-21-88
B	CHANGE DIMS	7-10-91
C	CHANGE AND DELETED DIMS	11-11-94
D	CHANGE DIMS	2-15-95
E	REVISED	9-20-95



DRILLED AND C-SUNK
FOR #8 X 3/4 SMS
(2) PIECES



DWG. NO. 11528

Trimco
LOS ANGELES, CA

1061 (BBS P/N 316)
FLUSH PULL
DR. BY: L.R.

TRIMCO RESERVES THE
RIGHT TO MAKE DESIGN
CHANGES WITHOUT NOTICE.