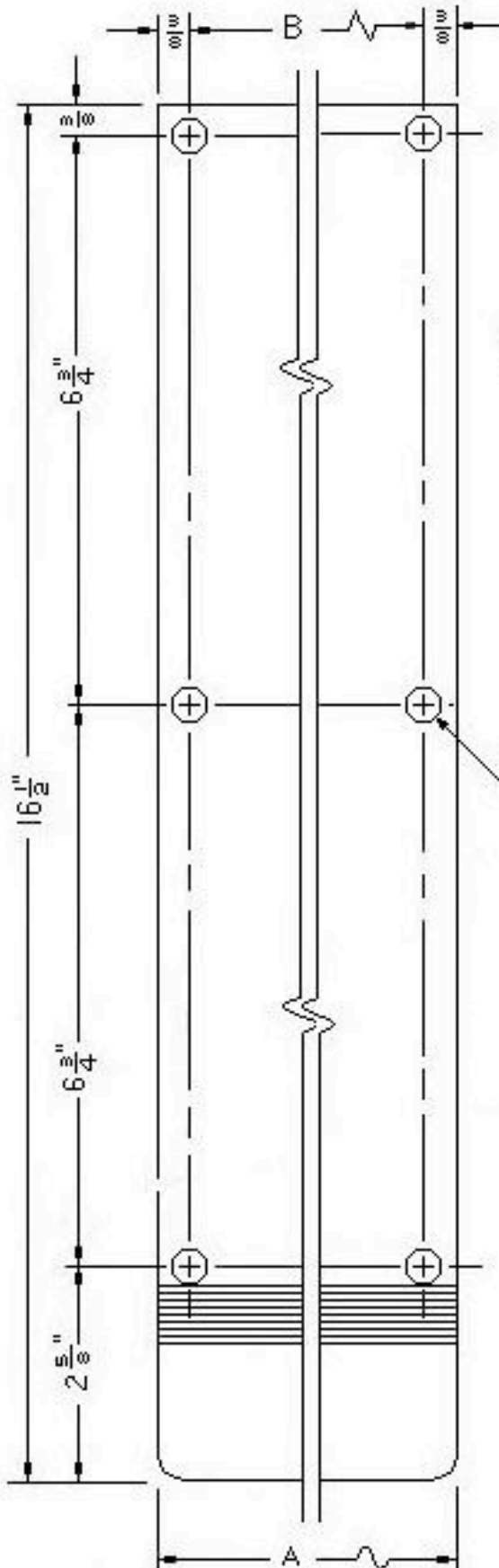


A REVISED 12-21-86

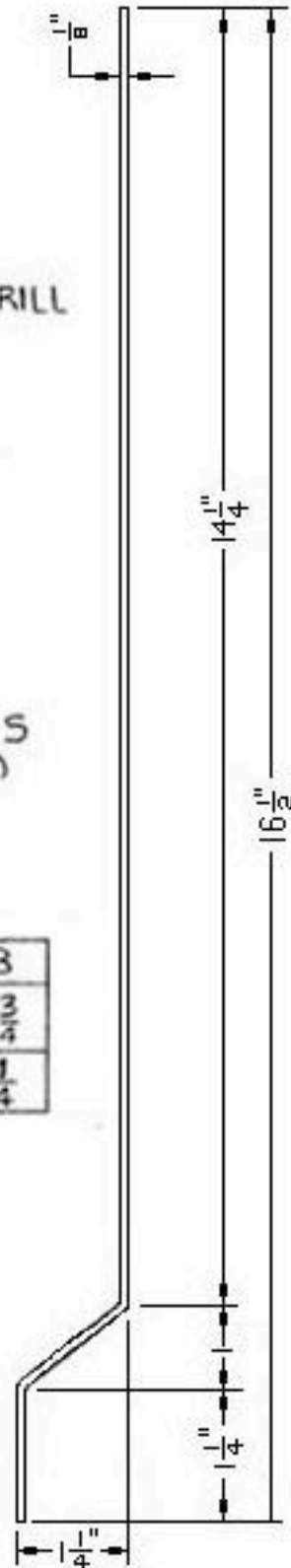
B REVISED: 4-5-95



NOTES:
1. DO NOT PREDRILL
DOOR.

NO 8X1 OHPHWS
(3/16" DIA., CONK)

TRIMCO #	A	B
1820	3 1/2	2 3/4
1820-11	8"	7 1/4



DWG. NO. 11516