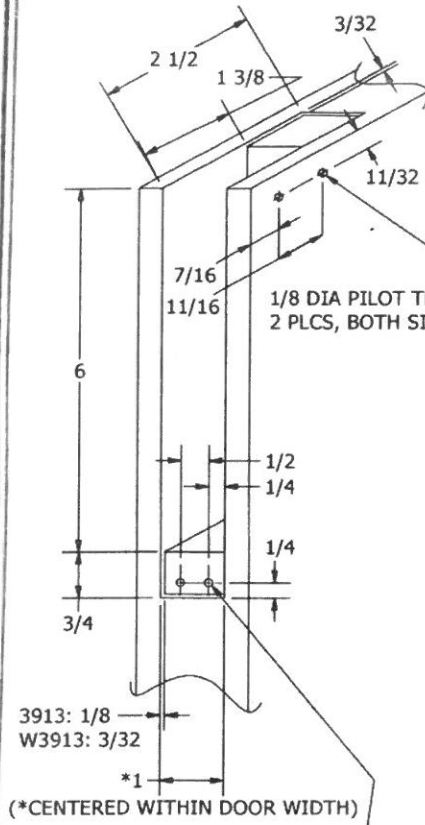




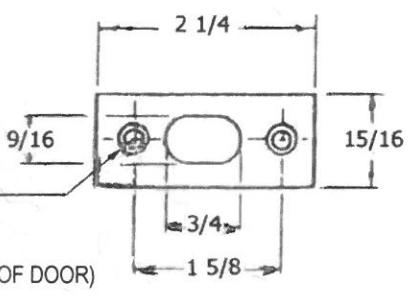
**3913, W3913
FLUSH BOLT**



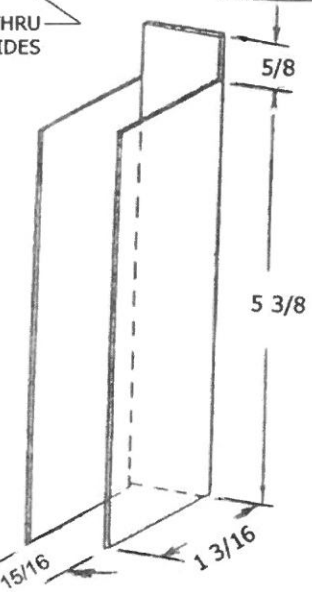
1/8 DIA PILOT X 1/2 DEEP, 2 PLCS
W3913 ONLY, ADD:
3/8 DIA X 82 DEG COUNTERSINKS

**DOOR PREP
FIGURE 1**

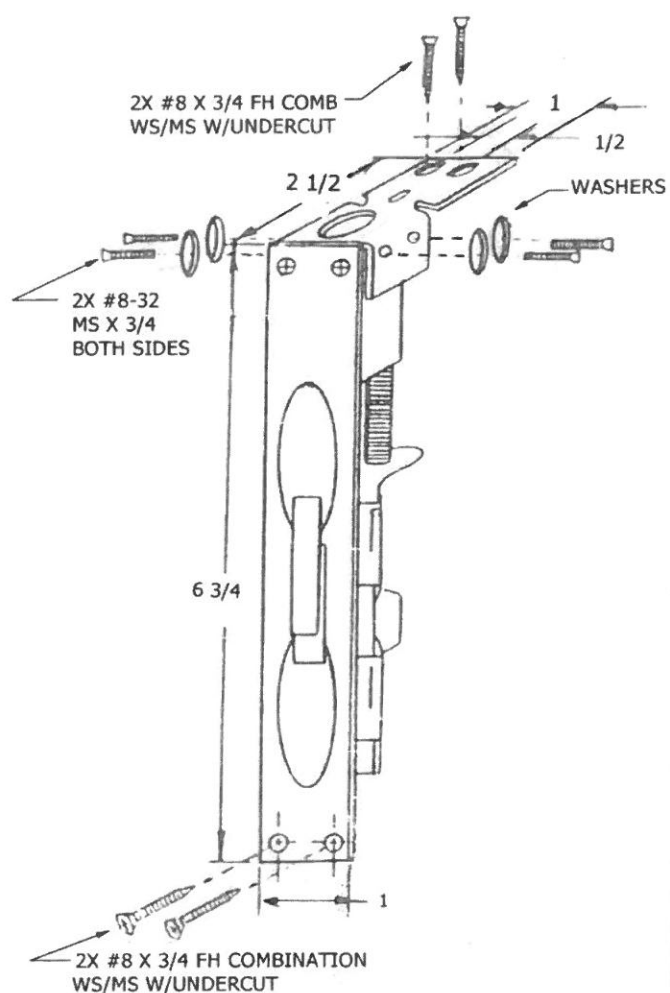
2X #8 X 3/4 WS/MS COMB
(3/16 DIA COUNTERSINK)
BACKSET = 3/4"
(CENTER OF ROD TO EDGE OF DOOR)



**STRIKE
FIGURE 4**



**FLUSH BOLT COVER
FIGURE 2**



**FIGURE 3
PATENT #4315647**

INSTALLATION INSTRUCTIONS

1. ROUT DOOR AS SHOWN IN FIGURE 1.
2. CHISEL DOOR IN REGIONS INDICATED (SEE FIGURE 1) AS REQUIRED SO FLUSH BOLT FITS FLUSH TO BOTH THE FRONT AND TOP DOOR EDGES.
3. DRILL FOUR (4) 1/8 PILOT HOLES (AND 2 COUNTERSINKS FOR THE W3913 ONLY) AS SHOWN IN FIGURE 1.
4. INSERT FLUSH BOLT (THE COVER, SHOWN IN FIGURE 2, SHOULD BE ATTACHED).
5. FASTEN FLUSH BOLT WITH THE SCREWS/WASHERS PROVIDED AS SHOWN IN FIGURE 3.
6. BORE THE FRAME WITH A 5/8 DIA X 1 DEEP HOLE. LOCATE THE HOLE SUCH THAT THE FLUSH BOLT IS CENTERED WITHIN THIS HOLE WHEN THE UNIT IS ACTUATED.
7. CENTER THE STRIKE (ON THE FRAME) WITH THE 5/8 DIA HOLE. INSTALL AS PER FIGURE 4.
8. VERIFY FLUSH BOLT ACTUATION.

THESE FLUSH BOLTS CAN BE INSTALLED IN 1 3/8 AND 1 3/4 WIDTH DOORS.

DRAWING # 11563

REV B: SUPERCEDES REV A, 7/29/91 IJS
 REV C: ADDED 1, 1/8 DIM WAS 3/32 FIG 1; 15/16 WAS 1, 1 5/32 WAS 1 5/16, FIG 2; 4/14/15 MF/JG
 REV D: REVISED FIG 1 CALLOUTS FOR 3913 VS W3913, ADDED CENTERING NOTE, FIG NOW CAD, FIG 1; 1 3/16 WAS 1 5/32, FIG 2; UPDATED ALL HARDWARE CALLOUTS;
 REWROTE NOTES; HANDDRAWN DIMS MADE CAD: 7-15-15 MF/LS/JG
 REV E: ADDED BACKSET SPECIFICATION TO FIGURE 4; 4-12-16, LS, JG