

**REVISIONS**

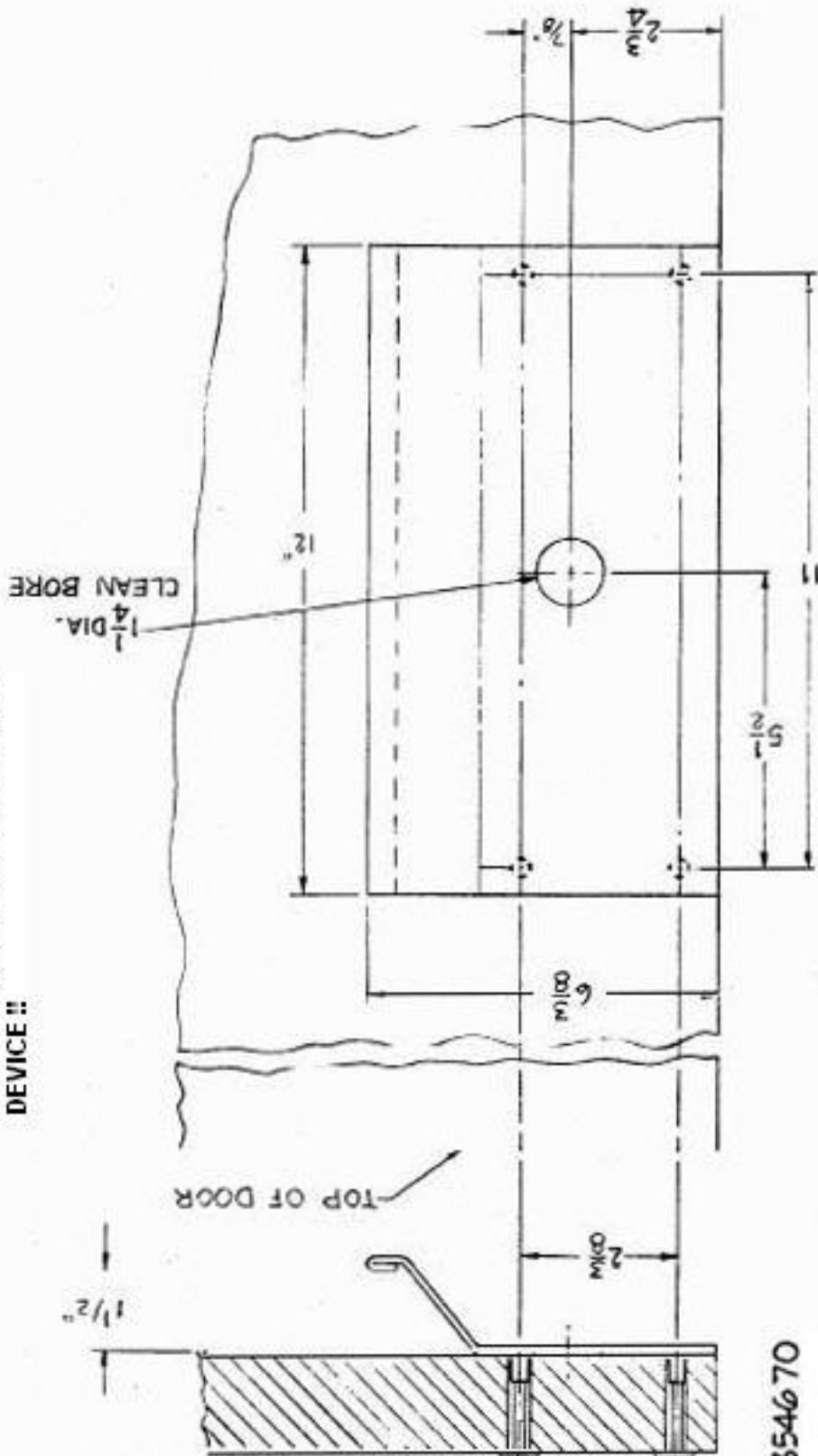
LTR	DESCRIPTION	DATE	CHECKED
--	NEW DWG.	4-13-95	<i>[Signature]</i>
A	ADDED: NOTE 1 AND 2.	8-18-95	<i>[Signature]</i>
B	ADDED NOTE #3	10-31-05	DLS

**NOTES:**

- SUFFIX : FC = FLUSH CYL PREP  
 NC = NO CYL PREP  
 RC = ROUNDED CORNERS  
 SP = SPECIAL ATTACHMENT LOCATIONS

3. DO NOT USE THIS TEMPLATE IF PULL IS BEING MATED TO A PANIC DEVICE !!

DRILL 1/2" DIA HOLE  
 1/4-20x1 1/2 PHOHS  
 X FINISH WASHER  
 (4 PLACES)  
 NOTE 2. ADD 3/4" DIA. X 1/2" DEEP COUNTERBORE  
 AS INDICATED WHEN 1091 MAT'L. OTHER  
 THAN STAINLESS STEEL.



**PATENT # 354670**

Book No. \_\_\_\_\_ Date Requested: \_\_\_\_\_  
 This template is provided for use only on  
 the job for which it was requested.  
 Trimco/BBW reserves the right to make  
 design changes without notice.

**Trimco / BBW**  
 Trimco Best Manufacturing Company, Inc.  
 3528 Emery Street, P.O. Box 23277  
 Los Angeles, CA 90023, USA

SCALE \_\_\_\_\_  
 DRAWN BY T.A. 4-13-95

TITLE 1091  
 ANTI-VANDAL, PULL NO ASTRJ  
 PART NO \_\_\_\_\_  
 A DWG. NO. 11437