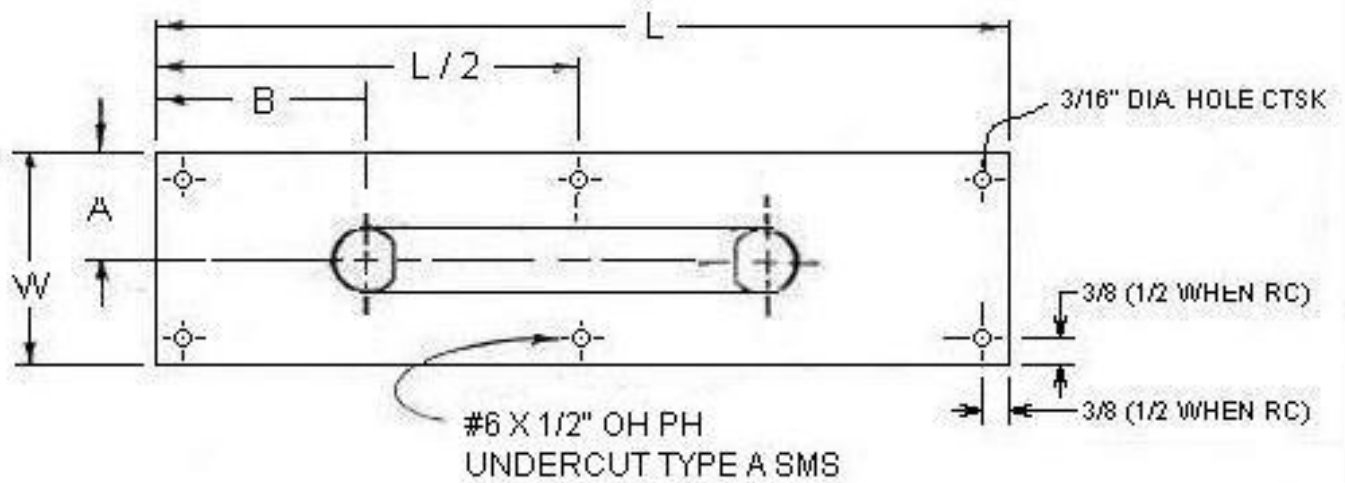
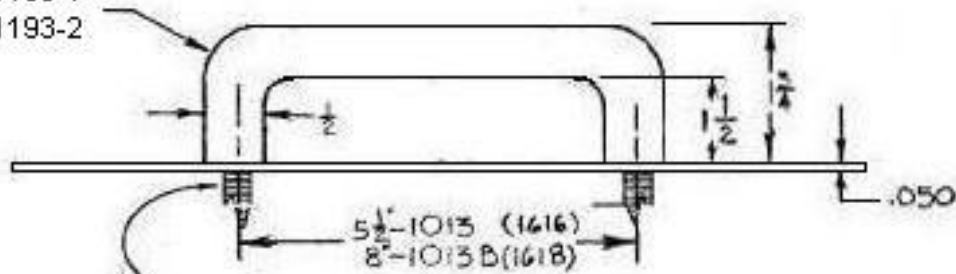


REVISED: 3-27-95

REVISED: 12-18-86



GRIP: 1013: 1193-1  
1013-B: 1193-2



1/4-20 X 2-1/4" T.B.  
X #14 WASHER

NOTE: DO NOT PRE-DRILL DOOR

PULL PL	PUSH PL.			1013		1013-B
		W	L	A	B	B
1013-2	1001-1	3-1/2	15	1-3/4	4-3/4	3-1/2
1013-3	1001-3	4	16	2	5-1/4	4

DWG. NO. 11509

**Trimco / BBW**  
 Triangle Manufacturing Company, Inc.  
 3528 Emery Street, P.O. Box 23277  
 Los Angeles, CA 90023, USA

1013  
PULL PLATE

DR. BY: L. R.

TRIMCO RESERVES THE RIGHT  
TO MAKE DESIGN CHANGES  
WITHOUT NOTICE.